

HERSHEY DESIGN GROUP, LLC. IS NOT AN ARCHITECT OR AN ENGINEER. ALL STRUCTURAL CONSIDERATIONS SHOULD BE VERIFIED BY AN ARCHITECT OR ENGINEER. ALL LOCAL CODES SHOULD BE FOLLOWED.

HERSHEY DESIGN GROUP, LLC.
THE CORNERSTONE OF GREAT DESIGNS

(302) 629-6004

SUSSEX CO DELAWARE
2003 IRC CODES

INSIGHT HOMES
DRAWN BY C. HERSHEY

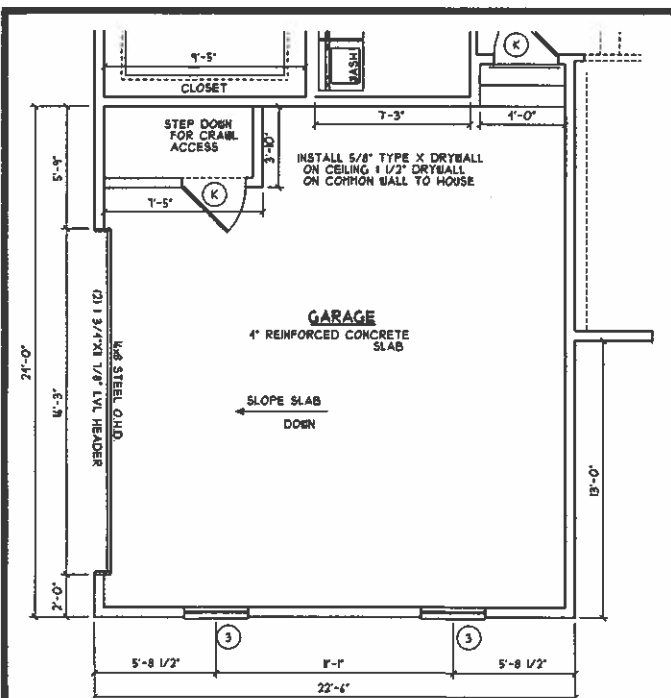
ISSUE DATE: 8/30/09
REVISED:

SCALE 1/4" = 1'-0"

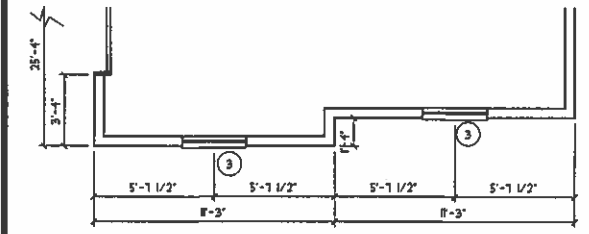
JERRY - FIRST FLOOR PLANS

SHEET # 5.1

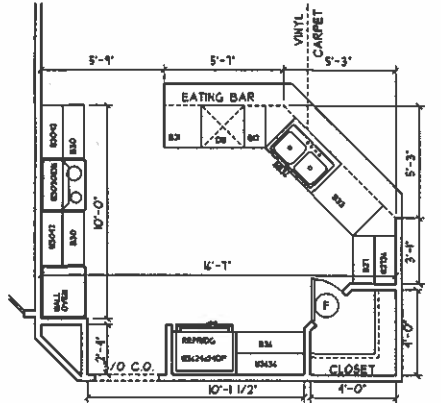
DRAWING # NEWJERRY



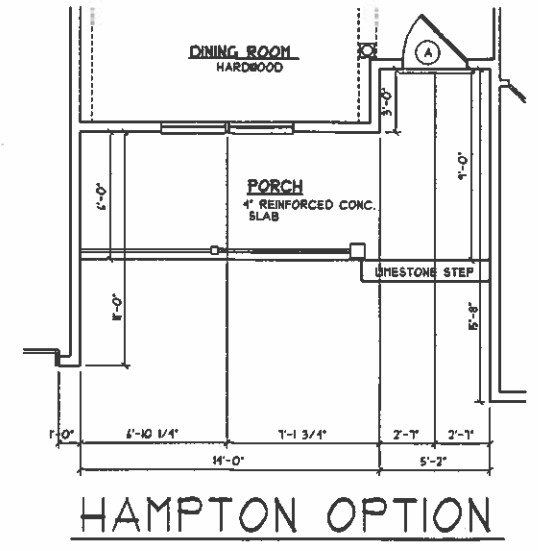
OPT. SIDE LOAD GARAGE



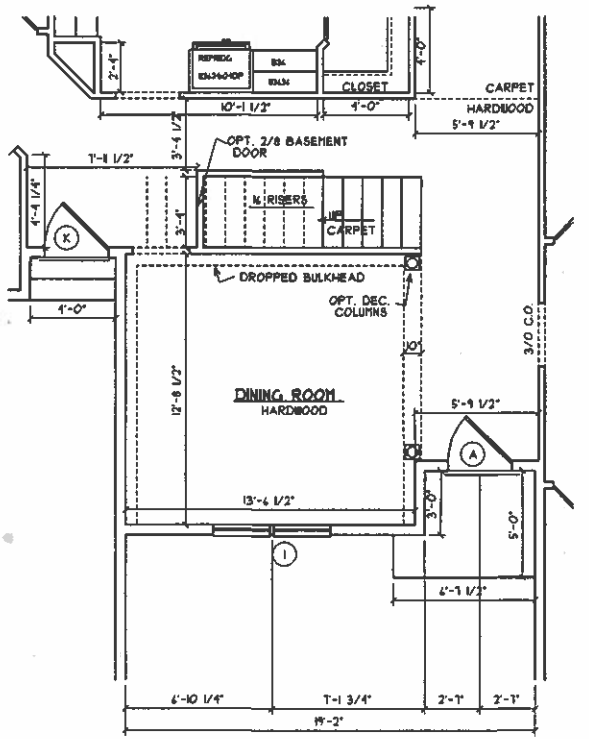
SPLIT FRONT OPT.



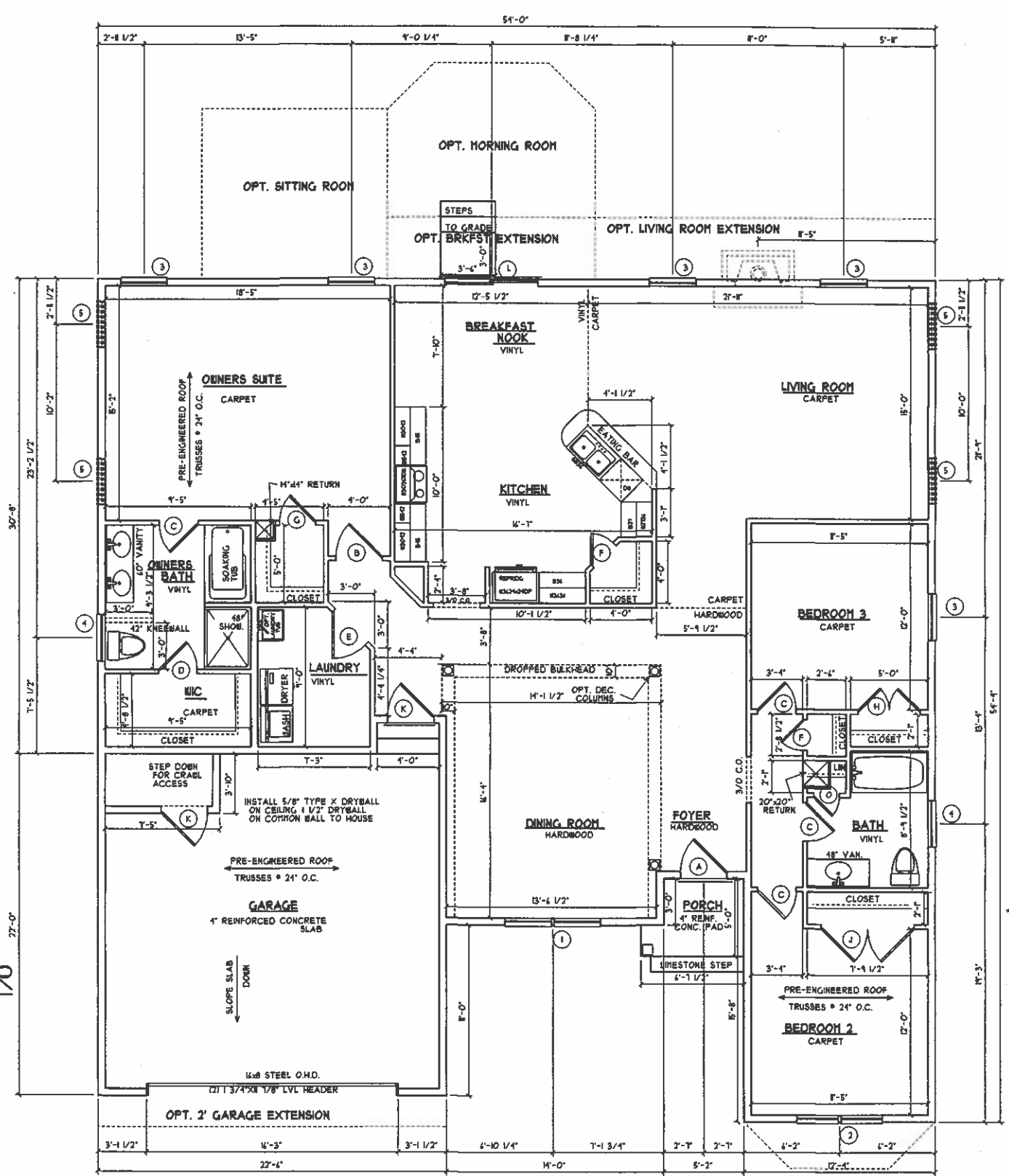
GOURMET KITCHEN OPT.



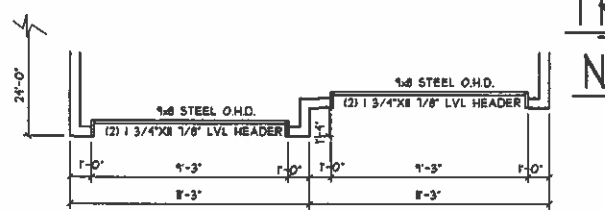
HAMPTON OPTION



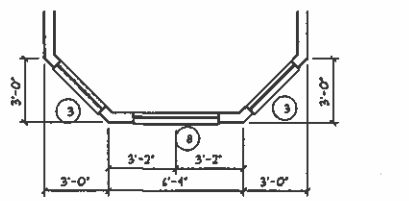
OPTIONAL SECOND FLOOR ACCESS



TRADITIONAL NO UPSTAIRS



SPLIT FRONT LOAD OPT.



OPT. WALKOUT BAY

DOOR SCHEDULE			
LABEL	TYPE	R.O.	INT./EXT.
A	3/0 SCROLLED PANEL	38 1/2" x 22 1/2"	EXT.
B	3/0 BEDROOM	38 1/2" x 22 1/2"	INT.
C	2/4 BEDROOM	34 1/2" x 22 1/2"	INT.
D	2/4 CLOSET	34 1/2" x 22 1/2"	INT.
E	2/8 PASSAGE	34 1/2" x 22 1/2"	INT.
F	3/0 CLOSET	38 1/2" x 22 1/2"	INT.
G	2/4 CLOSET	34 1/2" x 22 1/2"	INT.
H	4/0 DBL CLOSET	50 1/2" x 22 1/2"	INT.
J	4/0 DBL CLOSET	50 1/2" x 22 1/2"	INT.
K	3/0 L-PANEL DOOR	38 1/2" x 22 1/2"	EXT.
L	6/0 3/8 SLIDING GLASS DOOR	14 1/2" x 22 1/2"	EXT.
M	1/4 CLOSET	8 1/2" x 22 1/2"	INT.
N	2/8 INSULATED	34 1/2" x 22 1/2"	EXT.
O	1/8 CLOSET	22 1/2" x 22 1/2"	INT.
P	5/0 DBL CLOSET	62 1/2" x 22 1/2"	INT.

WINDOW SCHEDULE			
LABEL	TYPE	R.O.	
1	SH305L-2	12" x 24"	
2	SH285L-2	64" x 24"	
3	SH305L	36" x 24"	
4	SH305L	36" x 24"	
5	OPT. SH305L	36" x 24"	
6	SH244L	28" x 24"	
7	SH244L-2	56" x 24"	
8	P405L	48" x 24"	
9	SH244L-2	56" x 24"	
10	SH305L	36" x 24"	

FLOOR PLAN

* 9'-1 1/2" CEILING HEIGHT
* 2" EXTERIOR WALLS @ 24" O.C.
* 3 1/8" 1A FLOOR JOISTS @ R27 O.C.
* PRE-ENGINEERED ROOF TRUSSES @ 24" O.C.
* VINYL LOW-E CLAD WINDOWS
* INSTALL SMOKE DETECTORS AS REQUIRED BY CODE
240 SQ.FT.