

Sadie's Run

32143 Lynch Road, Selbyville, DE 19975

(32130 Lynch Road Selbyville, DE 19975)



Spacious Homesites with Convenient Access to Fenwick Island and Route 54

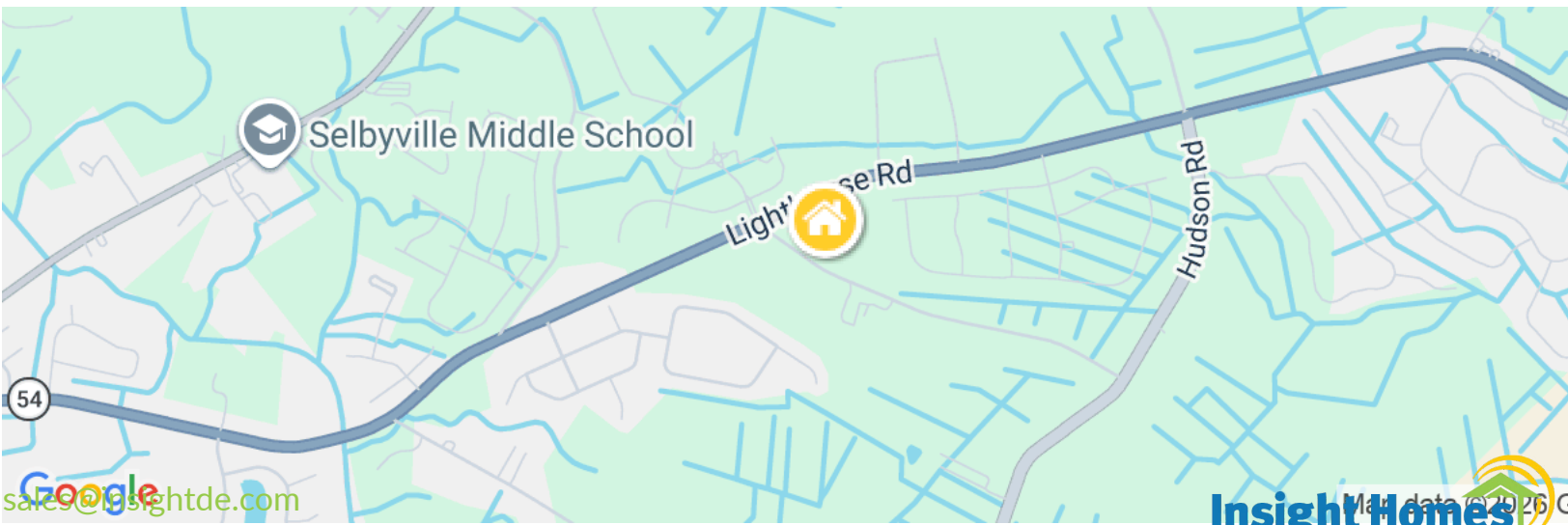
Large 1/2 Acre Lots
Side-Entry Garage Included
No HOA Restrictions

Sadie's Run is a peaceful four-parcel minor subdivision located just off Lighthouse Road in Selbyville. Tucked away on Lynch Road, this limited collection of homesites offers a rare opportunity to enjoy spacious, half-acre lots in a quiet setting—without sacrificing convenience to the beach, shopping, and dining in nearby Fenwick Island.

With no HOA restrictions, you'll have the flexibility to create the outdoor space you've always wanted, whether it's a garden, workshop, or room for backyard entertaining. Each parcel has been carefully planned to support a comfortable, coastal lifestyle in one of Delaware's most desirable areas.

Sadie's Run is perfect for those who value both privacy and proximity—offering just the right blend of seclusion and accessibility in a growing area.

From Route 113: Take Route 54 East (Lighthouse Road) toward Fenwick Island for approximately 6.5 miles. Turn left onto Lynch Road. Sadie's Run homesites are about one-tenth of a mile ahead on your left.



sales@itsightde.com
302-956-9337

Insight Homes
Map data © 2026
It's Just a Better House

Features, homes and pricing are subject to change without previous notice. Home designs are artist renderings and some homes offered may have design differences.

Prices good through 4/24/2026

www.itsjustabetterhouse.com



EQUAL HOUSING OPPORTUNITY

Sadie's Run

32143 Lynch Road, Selbyville, DE 19975

(32130 Lynch Road Selbyville, DE 19975)



Lloyd

\$583,300

1,712 - 2,760 Sq. Ft.
3 - 5 BR | 2 - 3 BA | 1 or 2 STORY



Whatley

\$608,300

1,979 - 3,590 Sq. Ft.
3 - 6 BR | 2 - 4 BA | 1 or 2 STORY



Frank

\$639,300

2,572 - 3,010 Sq. Ft.
4 - 5 BR | 3 BA | 2 STORY



Reston

\$670,300

2,484 - 3,266 Sq. Ft.
3 - 6 BR | 2.5 - 3.5 BA | 2 STORY



Kramer

\$761,400

3,167 - 4,277 Sq. Ft.
3 - 6 BR | 2.5 - 4 BA | 2 STORY



Cartwright

\$598,300

1,821 - 3,817 Sq. Ft.
3 - 5 BR | 2 - 3.5 BA | 1 or 2 STORY



Jerry

\$618,300

2,140 - 3,401 Sq. Ft.
3 - 6 BR | 2 - 3.5 BA | 1 or 2 STORY



Nelson

\$644,300

2,405 - 3,941 Sq. Ft.
3 - 5 BR | 2 - 3.5 BA | 1 or 2 STORY



Peterman II

\$711,400

3,145 - 3,735 Sq. Ft.
4 - 6 BR | 3 - 4 BA | 2 STORY

sales@insightde.com
302-956-9337

Insight Homes
It's Just a Better House

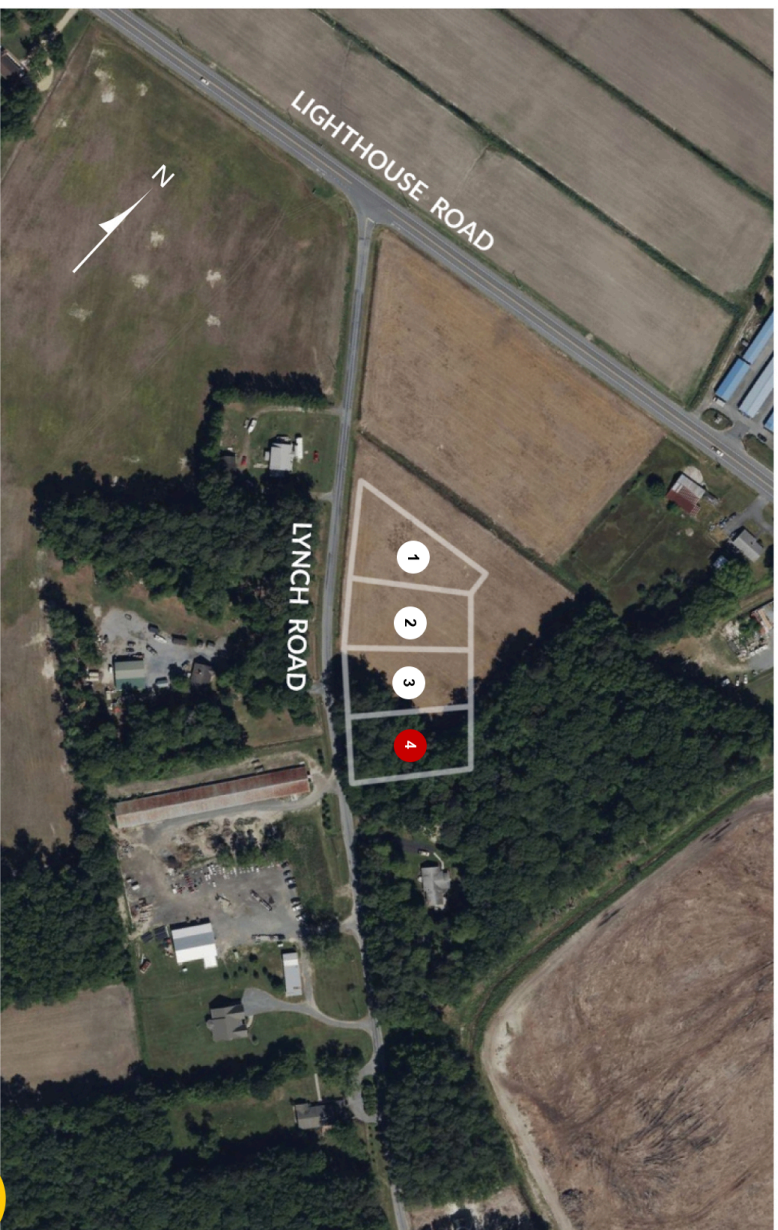
Features, homes and pricing are subject to change without previous notice. Home designs are artist renderings and some homes offered may have design differences.

Prices good through 4/24/2026

www.itsjustabetterhouse.com



SADIE'S RUN



- AVAILABLE LOTS
- NOT AVAILABLE
- SOLD LOTS
- ➡ COMPLETED HOME
- MOVE-IN READY HOME

SADIE'S RUN SITE PLAN



All site plans, community maps and computer generated or enhanced depictions shown are conceptual in nature, which may not accurately represent the actual condition of the item(s) being represented and are subject to change without notice. All buying decisions should be based on visiting and viewing the physical homesite.